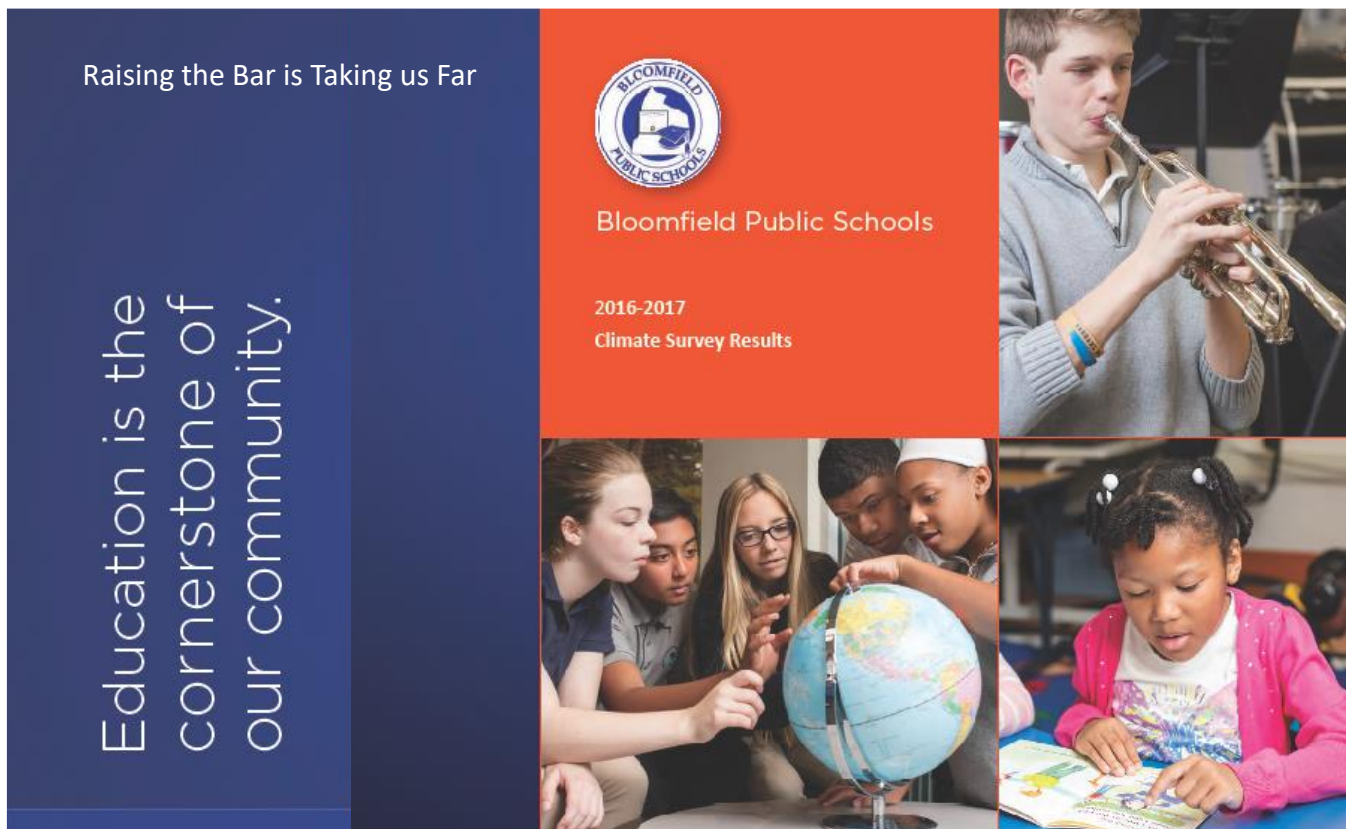




# 2016-17 Annual Climate Survey Results

April 25, 2017





# Today we will share with you...

- Results of the 2016-17 Annual Climate and Satisfaction Survey
- Background:
  - Why we administer the annual survey
  - When the survey is administered
  - What the survey measures
- Connecting results with actions to improve climate and satisfaction at our schools



# Why we administer the annual survey

The annual Climate and Satisfaction Survey, while not mandated by the SDE, invites all staff and families, as well as students in grades 5 through 12, to respond to an online questionnaire about their school

- Aligns with priority three on the District Accountability Plan
- Informs us about perceptions of our school community
- Initiates data-based conversations among all members of the school community to transform current practices
- Goes above and beyond what is required by the Department of Education



# When the Survey Took Place

January 9 – February 24, 2017.





# What the Survey Measures

Responses from three distinct groups:

- Students (Grades 5-12)
- Families (All Schools)
- Staff (All Schools)

Responses to similar questions in alignment with the District Accountability Plan:

- Curriculum, Instruction and Assessment
- Positive School Climate
- Family and Community Engagement



# Sample Questions

## Family

1.) My child's teachers show that they have high expectations for student learning by providing a challenging curriculum. Clear

Strongly Agree ☐ Agree ☐ Disagree ☐ Strongly Disagree ☐ Does not apply ☐

## Student

1.) My teachers show that they have high expectations for student learning by providing a challenging curriculum. Clear

Strongly Agree ☐ Agree ☐ Disagree ☐ Strongly Disagree ☐ Does not apply ☐

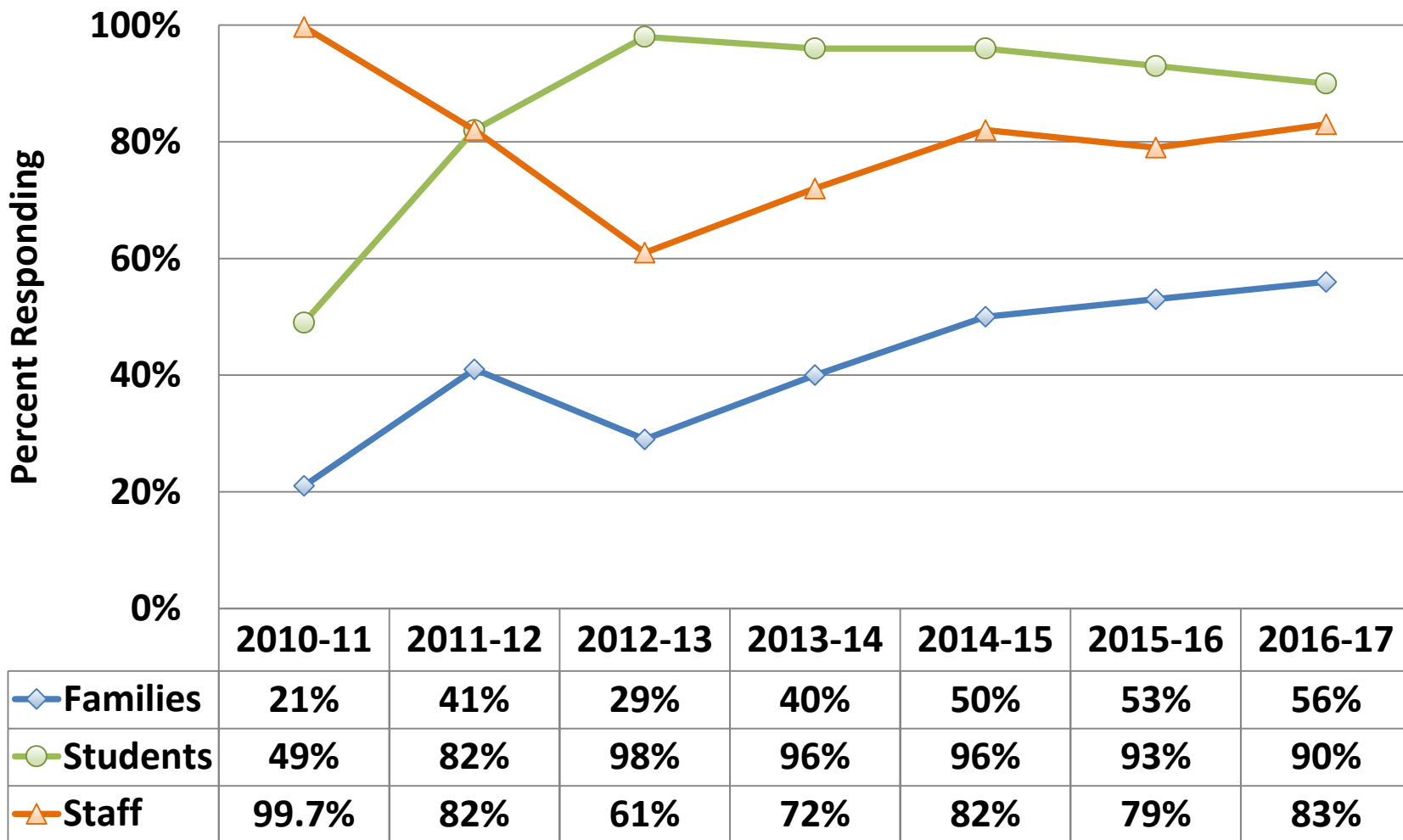
## Staff

1.) We show that we have high expectations for student learning by providing a challenging curriculum. Clear

Strongly Agree ☐ Agree ☐ Disagree ☐ Strongly Disagree ☐ Does not apply ☐

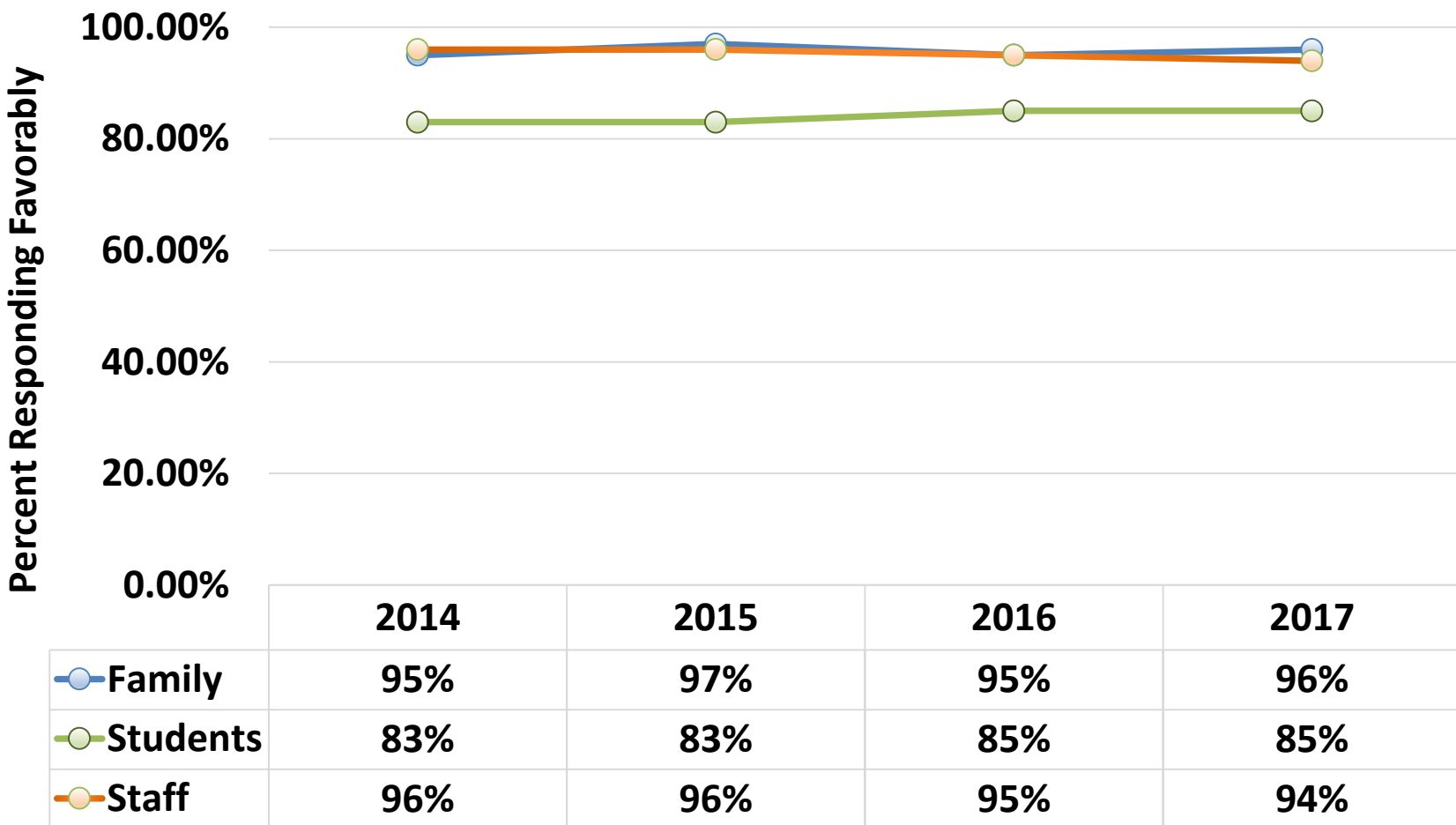


## Participation Results





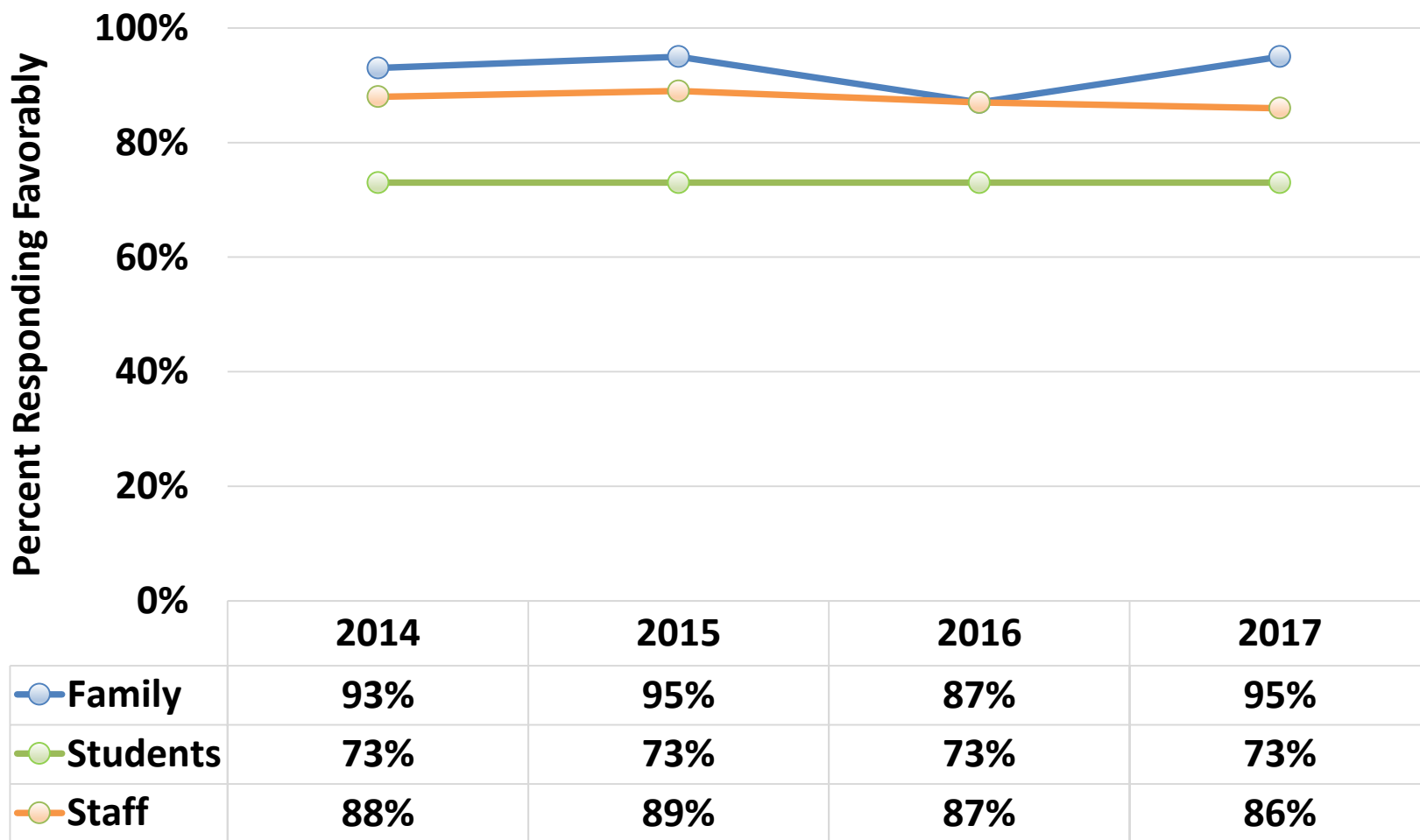
# Rigorous Curriculum, Instruction & Assessment





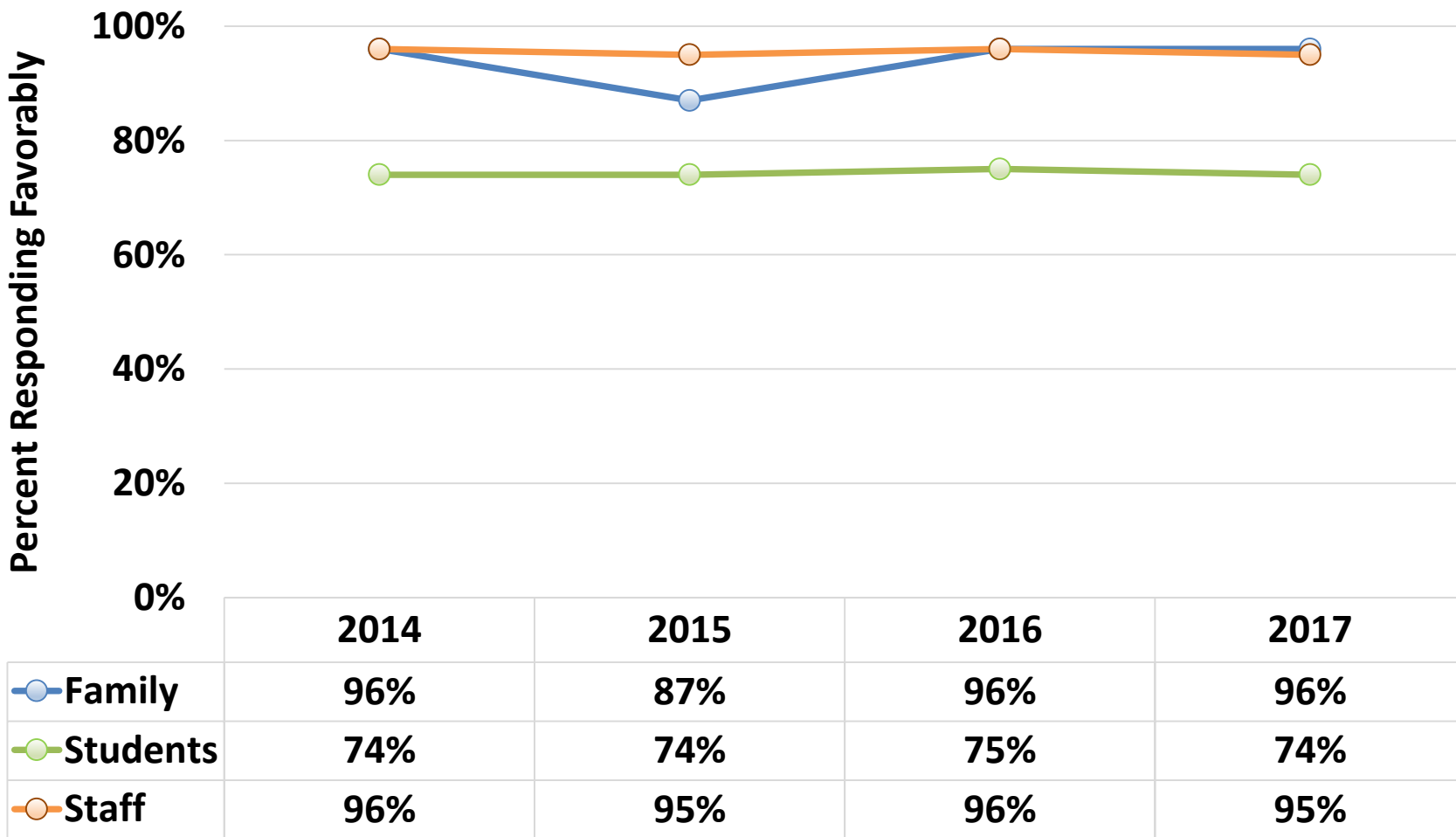


## Positive School Climate





# Family and Community Engagement





# Observations / Implications

- Participation
  - Since changing vendors in 2013, participation has generally improved
- Observations
  - Student favorable responses trend lower than families and staff, rating Rigorous Curriculum, Instruction and Assessment highest
  - Families report highest satisfaction with Rigorous Curriculum, Instruction and Assessment and Family and Community Engagement
  - Staff report highest satisfaction with Family and Community Engagement



# ACTION STEPS

1. Principals will share survey results
2. Results will be shared with all members of District Data Team, School Climate Committees, and each school community
3. Effective participation practices will be replicated
4. School Data Teams will dive into the data
5. In alignment with the District Climate Policy, the District Climate Steering Committee will meet to plan positive Climate events for schools as directed by the data from this annual survey



# Questions

